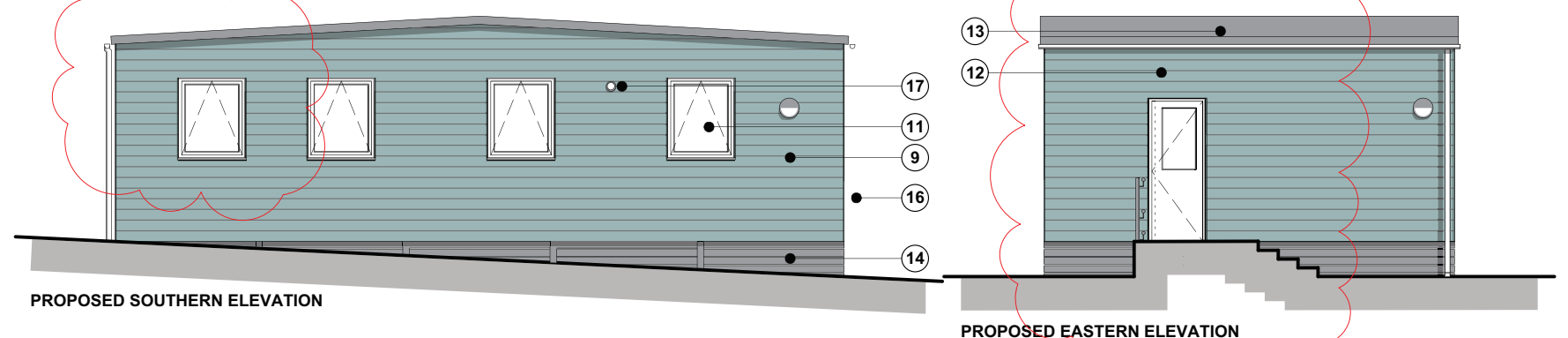
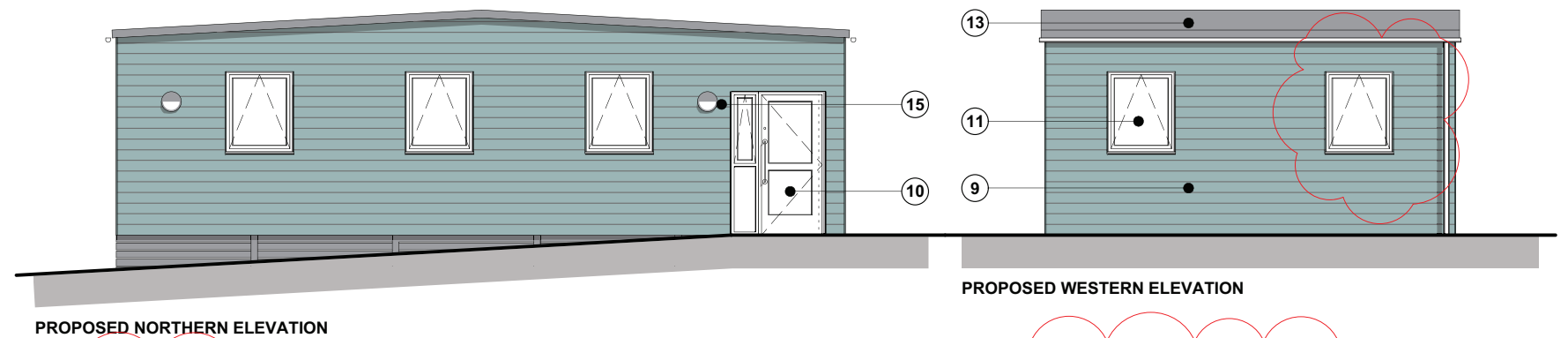
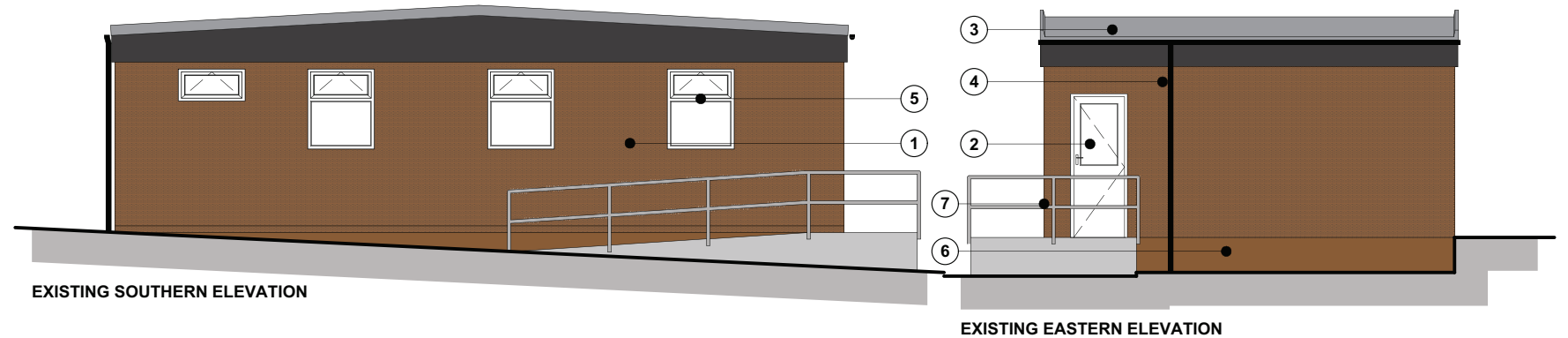
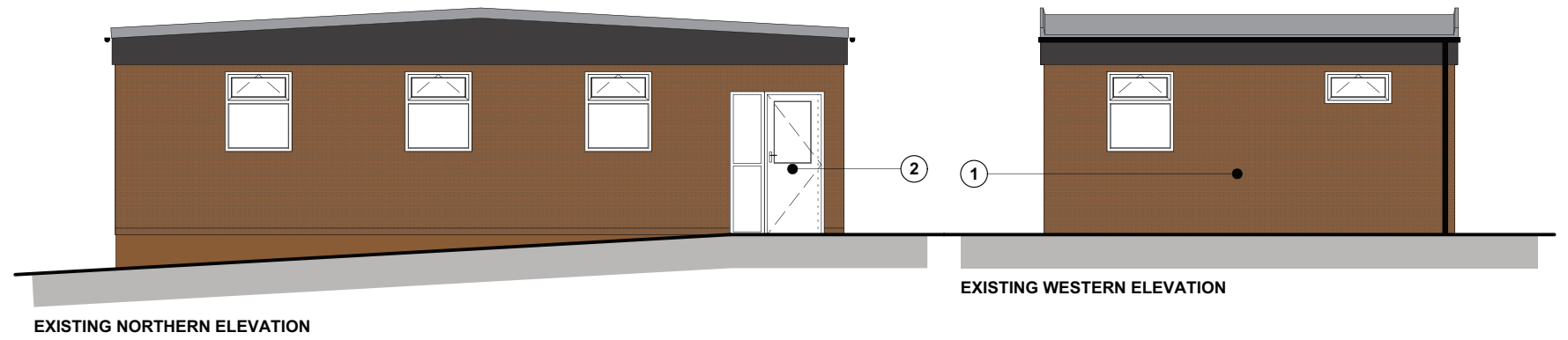
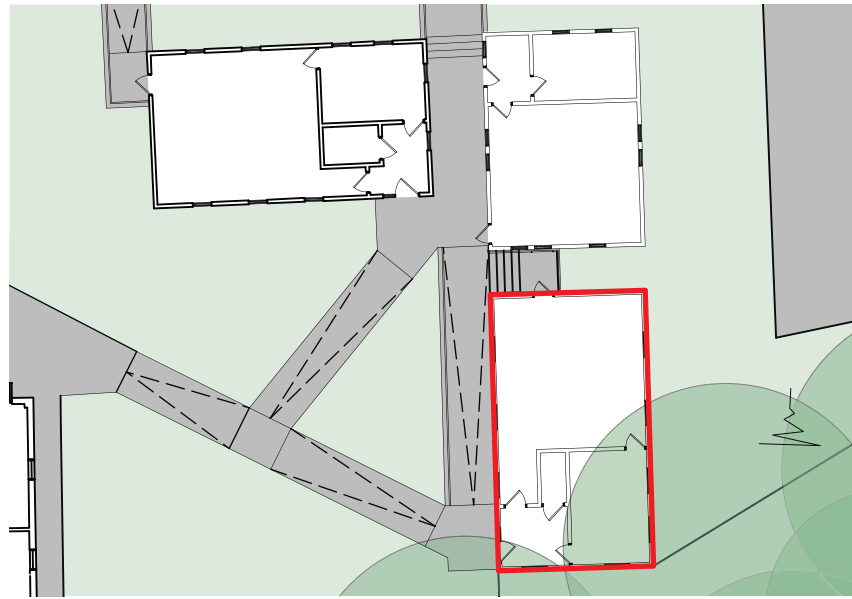


**CLATTERFORD CENTRE : REMODELLING & REFURBISHMENT WORKS  
MODULAR BUILDING No. 1.**



**Key to External Finishes.**

- ① Brown stippled render finish over plyboard.
- ② White uPVC external doors with white ironmongery.
- ③ Built up felt system with welded drip to perimeter.
- ④ Black uPVC rainwater goods.
- ⑤ White uPVC external casement windows.
- ⑥ Timber skirt.
- ⑦ Galvanized handrails & balustrades.
- ⑧ Facing brickwork retaining walls.
- ⑨ Cedral lap external wall cladding - colour Blue Grey C10.
- ⑩ PPC extruded aluminium doors & side screen, 850mm clear opening - colour White BS 00E55..
- ⑪ PPC extruded aluminium top hung casement windows, 100mm opening - colour White BS 00E55.
- ⑫ uPVC rainwater goods - colour White.
- ⑬ Soprema warm built up flat roof system.
- ⑭ Treated timber skirt - finished Merlin Grey BS 18B25.
- ⑮ External light fitting.
- ⑯ PPC handrails & balustrades - colour Merlin Grey BS 18B25.
- ⑰ External CCTV camera position.

**CONSTRUCTION**



HCC Property Services,  
Three Minsters House,  
76 High Street, Winchester SO23 8UL.  
tel: (01962) 847801

Notes	
1 This drawing is © copyright Hampshire County Council 2019. No unauthorised reproduction permitted. All rights reserved.	3 This map is reproduced from Ordnance Survey material with the permission of Ordnance Survey on behalf of the controller of Her Majesty's Stationery Office © Crown Copyright. Unauthorised reproduction infringes Crown Copyright and may lead to prosecution or civil proceedings. (100019180), (2019)
2 No dimensions are to be scaled from this drawing	

rev	description	date	by
A	Tender	01/02/21	LGN
B	CONSTRUCTION	15/06/21	LGN
C	Windows enlarged as requested by school and FE door position moved	29/06/21	LGN

PROJECT				SHEET CONTENTS	
<b>CLATTERFORD CENTRE : Remodeling Works.</b>				<b>MODULAR BLDG no. 1. Existing &amp; Proposed Elevations</b>	
SCALE				DRAWING No.	
1:100 @A3				<b>E03812-118227- 09</b>	
DATE				FILE REF.	
01 Feb 21				File name	
DRAWN.				REVISION	
LGN				<b>C</b>	
CHKD.				Property Services	
---				HCC	